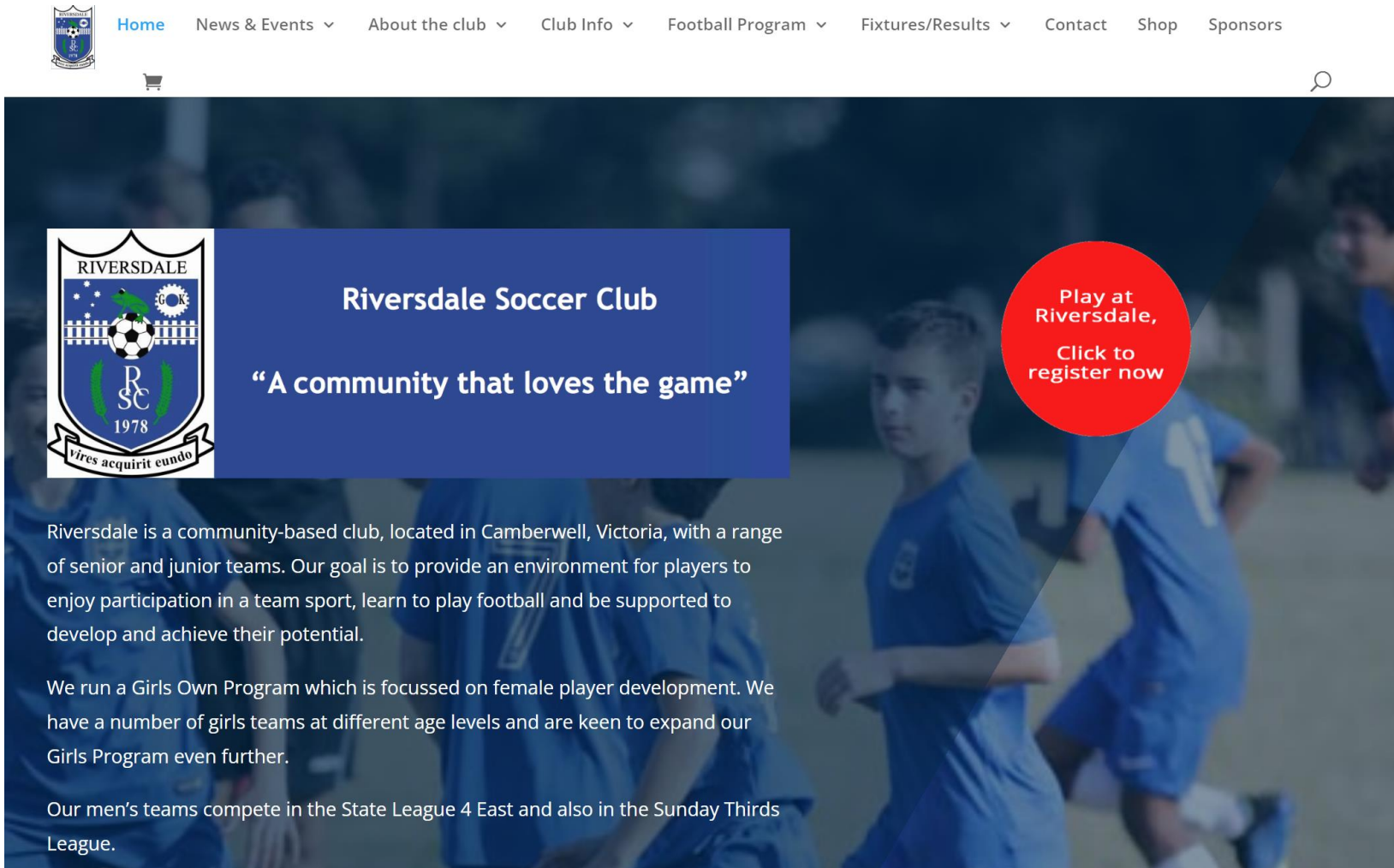



References – FV Handbook



https://www.footballvictoria.com.au/sites/ffv/files/2022-04/2022_Club_Handbook_0.pdf

References – RSC website

The banner features a background image of soccer players in blue uniforms. On the left is the club's crest, which includes a soccer ball, a green lizard, and the text 'RIVERSDALE', 'RSC', '1978', and 'vires acquirit eundo'. To the right of the crest is a dark blue box with white text. Further right is a red circle with white text. The background is a blurred photo of soccer players in blue uniforms.

 **Riversdale Soccer Club**
“A community that loves the game”

Play at Riversdale,
Click to register now

Riversdale is a community-based club, located in Camberwell, Victoria, with a range of senior and junior teams. Our goal is to provide an environment for players to enjoy participation in a team sport, learn to play football and be supported to develop and achieve their potential.

We run a Girls Own Program which is focussed on female player development. We have a number of girls teams at different age levels and are keen to expand our Girls Program even further.

Our men's teams compete in the State League 4 East and also in the Sunday Thirds League.

www.riversdalesc.com.au

[Home](#)[News & Events](#) ▾[About the club](#) ▾[Club Info](#) ▾[Football Program](#) ▾[Fixtures/Results](#) ▾[Contact](#)[Shop](#)[Sponsors](#)[Support](#)[Passport](#)[Riversdale SC](#) (Men's State League 4 East)[FIXTURE](#)[RESULTS](#)[LADDER](#)[Riversdale SC](#) (Men's State League 4 East Reserves)[FIXTURE](#)[RESULTS](#)[LADDER](#)[Riversdale SC](#) (Metropolitan League 5 South-East)

Previously Associated Competitions

[Riversdale SC](#) (Metropolitan League 7 South-East)[FIXTURE](#)[RESULTS](#)[LADDER](#)[Riversdale SC](#) (Boys' Saturday East 12 Joeys)[FIXTURE](#)[RESULTS](#)[LADDER](#)[Riversdale SC](#) (Girls' South-East 13B)[FIXTURE](#)[RESULTS](#)[LADDER](#)[Riversdale SC](#) (Boys' East 13D)[FIXTURE](#)[RESULTS](#)[LADDER](#)[Riversdale SC](#) (Girls' East 17/18C)[FIXTURE](#)[RESULTS](#)[LADDER](#)[Riversdale SC](#) (Boys' Saturday East 8 Joeys Red)[FIXTURE](#)[RESULTS](#)[LADDER](#)[Riversdale SC](#) (Girls' Sunday East 8 Joeys)[FIXTURE](#)[RESULTS](#)[LADDER](#)[Riversdale SC](#) (Boys' Sunday East 11 Joeys Red)[FIXTURE](#)[RESULTS](#)[LADDER](#)[Riversdale SC](#) (Boys' Saturday East 9 Joeys Red)[FIXTURE](#)[RESULTS](#)[LADDER](#)[Riversdale SC](#) (Girls' South-East 15C)[FIXTURE](#)[RESULTS](#)[LADDER](#)[Riversdale SC](#) (Girls' Sunday East 11 Joeys Red)[FIXTURE](#)[RESULTS](#)[LADDER](#)[Riversdale SC](#) (Boys' Sunday East 8 Joeys Green)[FIXTURE](#)[RESULTS](#)[LADDER](#)

Smart
bus
pay

[Sign Up](#)

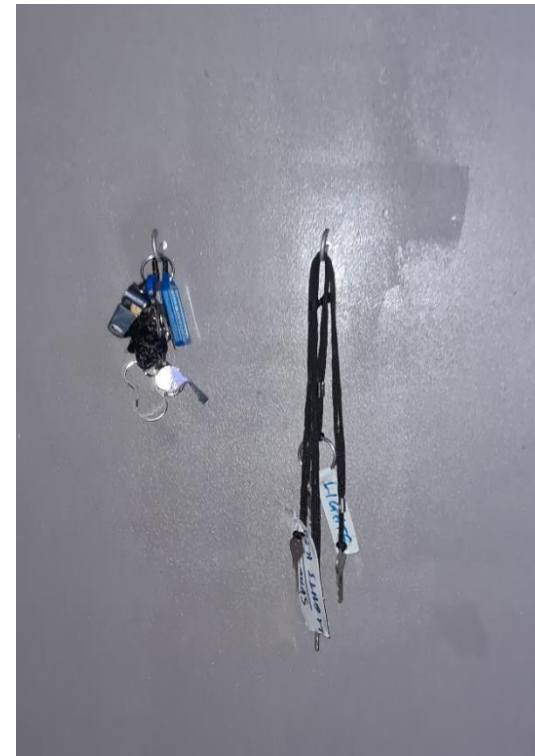
Keysafe

- On East wall of building (furthest from Car Park)
- Ask us for the code if you don't know it.
- Card must be placed in the 'correct' direction (or keysafe door jams or won't close)
- Opens: Store Room, Equipment Cage, Change Rooms, Social Room/Kitchen



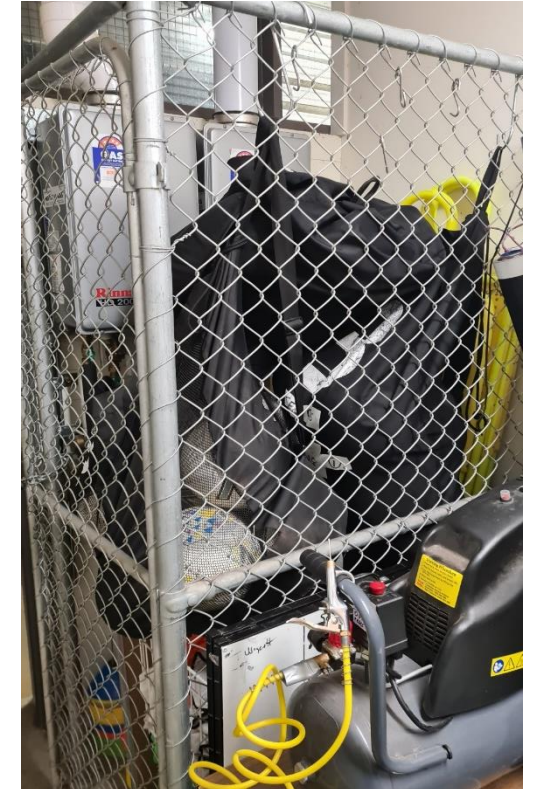
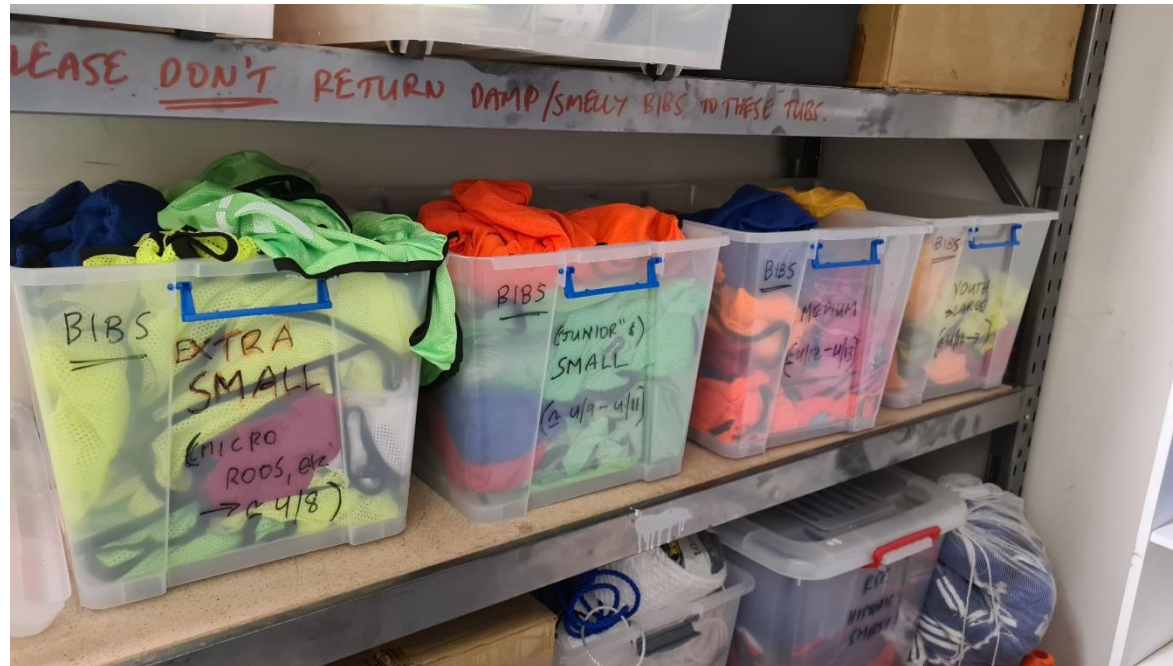
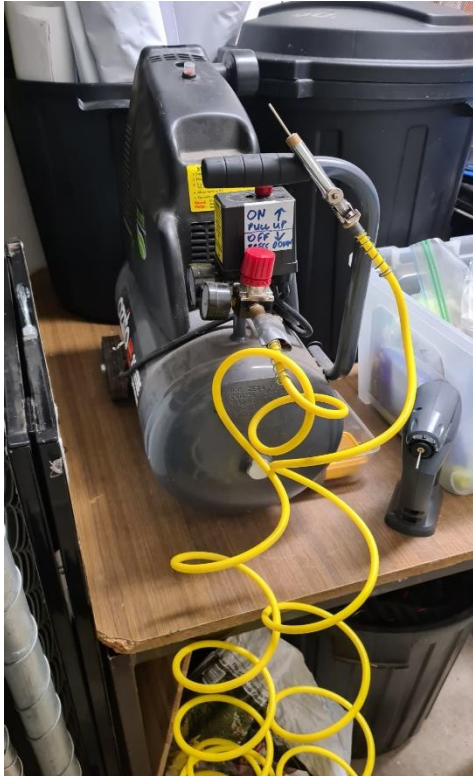
Store Room

- On East of building (furthest from Car Park)
- Back of door has keys for:
 - floodlights (black string 2 keys)
 - Goals (blue key tag) same key opens all padlocks (Samba goals in cricket nets and large goal chains)



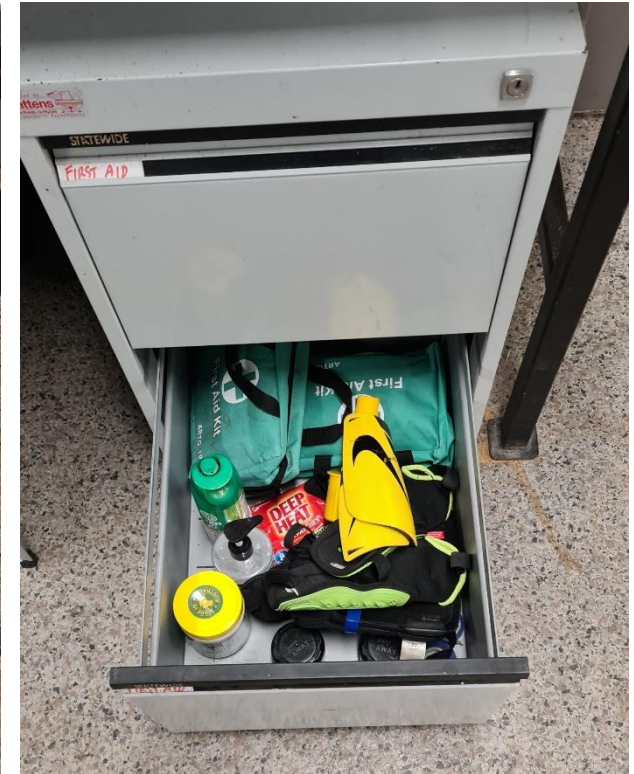
Store Room

- Contains tubs with some bibs (sorted into 4 'sizes') on the shelves
- Has a large compressor for pumping up balls (go easy, it's powerful!) – pull red knob 'up' for ON; press it down for OFF.
- Also a smaller hand-held one for 1-2 balls, etc.
- 'Cage' in the room holds Seniors equipment. If you need to use it, please return it straight away



First Aid

- All TMs should have a portable one in their blue backpack 'kit'
- At Hartwell, supplies are in filing cabinet in change rooms (top drawer)
- Spare shin pads and sporting supports/supplies in bottom drawer



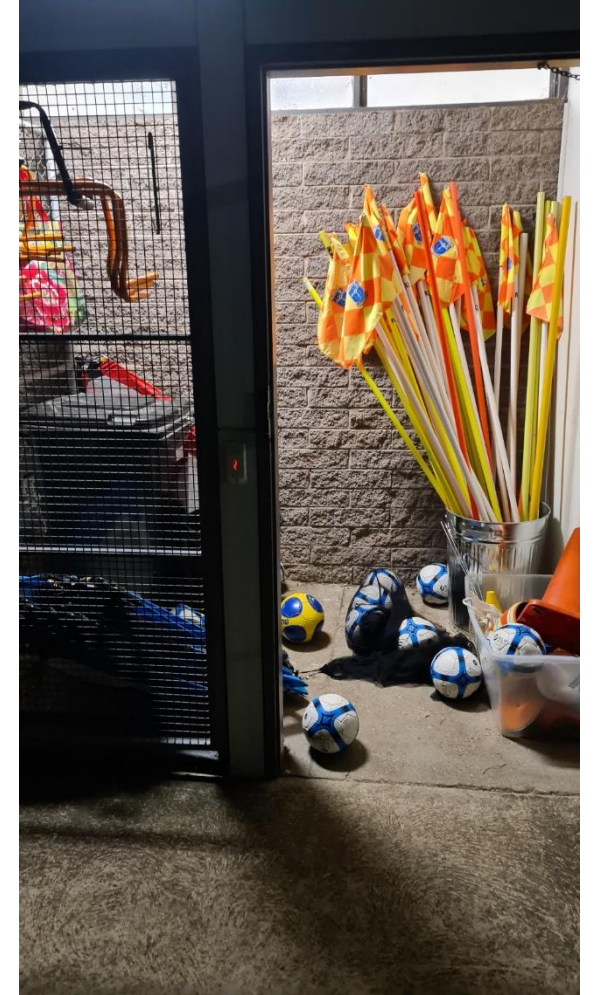
First Aid

- Defibrillator is located in the 'Social' Room (inside East corner of building) – walk in the door and turn right:



Equipment Cage

- PLEASE keep it tidy!
- Coaches will have their 'own' kit of balls, bibs, cones. Cage holds 'extras' for emergencies and Skills sessions
- 'Match Balls (Size 4/5) will be kept in the Referees (Umpire) room: the door next to Store Room Door - please return them!



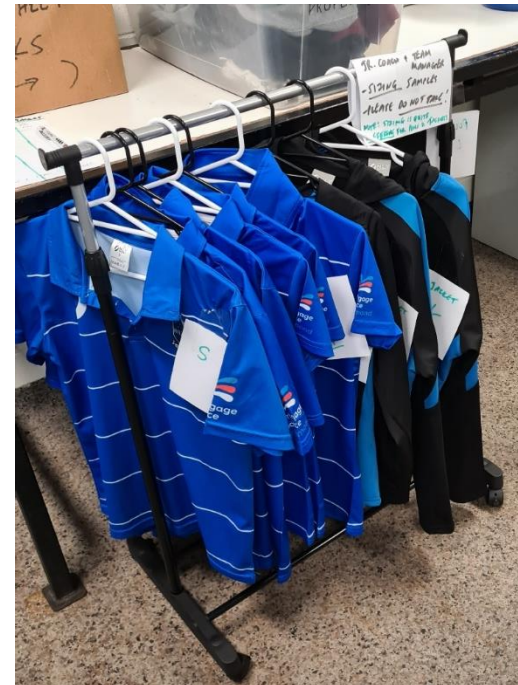
Floodlights

- Keys are on the hook on back of Store Room Door'
- Control box for lights is at the East corner of the building. Top key/lock = East ground; bottom key/lock = West ground.
- They automatically turn off at 9 pm (but still need to turn them off and take out keys).
- Lights are controlled via the Council so will only work from 5pm-9pm Mon-Fri.
- Currently a project about to be finalized for LED upgrade of floodlights.



Uniforms

- Uniform Shop is open Wednesdays 5.30pm – 6.30pm.
- Located in change rooms (facing the West ground/car park)
- Need [Stack Team App](#) to purchase U12 and under uniforms from Only Sport.
- U13 upwards use Nike strips; App not needed. Nick can provide details/help.
- Sizing samples for Team M'grs and Coaches' polos/jackets are in the change room next to the Uniform Shop



Uniforms

- If you have a colour clash with an opposition team (away team has to change), some 'sets of change shirts' (red for older age groups, orange for small teams) are available in the 'cupboard style' store room next to the equipment cage. For younger age groups, bibs are fine.
- Note: don't have to change shorts/socks colour, only shirts.
- Goalkeeper tops and gloves are also in that store room.



Age Group Game-Equipment Summary

Age Group	No of Players	Ball Size	Goals	Game length	Ref Fee (if applicable)
Under 7	4 v 4 (no GK)	3	Pop up	2 x 20 mins (5 min ½ time)	N/A
Under 8	7 v 7	3	Samba small	2 x 20 mins (5 min ½ time)	N/A
Under 9	7 v 7	3	Samba small	2 x 20 mins (5 min ½ time)	N/A
Under 10	9 v 9	4	Samba small or large	2 x 25 mins (5 min ½ time)	N/A
Under 11	9 v 9	4	Samba large	2 x 25 mins (5 min ½ time)	\$20
Under 12	9 v 9	4	Samba large	2 x 30 mins (5-10 min ½ time)	\$40
Under 13	9 v 9	4	Samba large	2 x 30 mins (5-10 min ½ time)	\$40
Under 15	11 v 11	5	Full size	2 x 35 mins (5-10 min ½ time)	\$45
Under 18	11 v 11	5	Full size	2 x 45 mins (5-15 min ½ time)	\$75

- If you have to pay referees, (mainly older age groups) we will send you about 5 games worth of fees and you can pay them. Will do the same about half way thru the season.

Nick's 'Miscellaneous'

- Does anyone have their first aid certificates?
- U12 and up entering teams scores by 6pm that night or let Nick know score
- Certificates for player attitude and Domino's vouchers
- Team kits
- Can everyone write a list of shirt numbers in their team?
- Refunds (for ref fees, TM/Coach rego refunds) - bank details needed, please send to Nick

Emil's 'Miscellaneous'

- Thank You!
- We are always looking for Sponsorships – please pass on any leads
- I will email out:
 - This info as a pdf
 - FV Handbook
 - RSC Handbook

Thank You !

